

Brighton Dome and MakeAmplify present

Touch and Glow



Brighton Dome Founders Room

Fri 1–Sun 24 Dec 2023

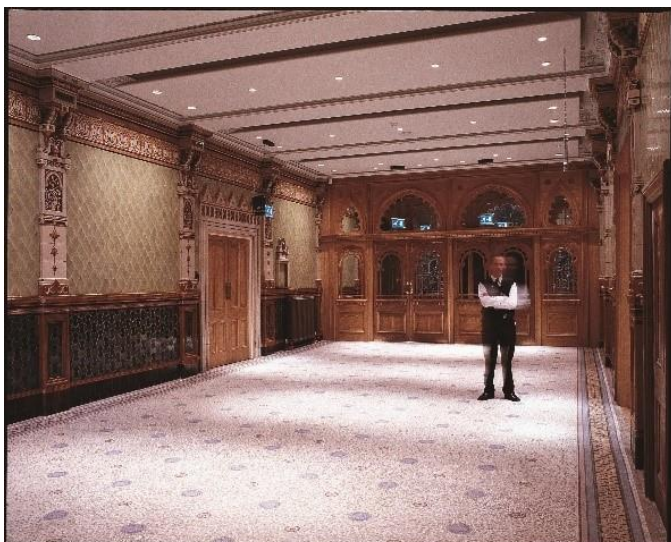


Arriving at Brighton Dome

You will be arriving to Entrance 4 on Church Street where our Ticket Office is. This is what Entrance 3 looks like:



When you arrive, a member of staff will scan your tickets, and if you have any bags, these will be checked by a member of our security team.



Our Staff wear black shirts with a gold Brighton Dome logo, like this:



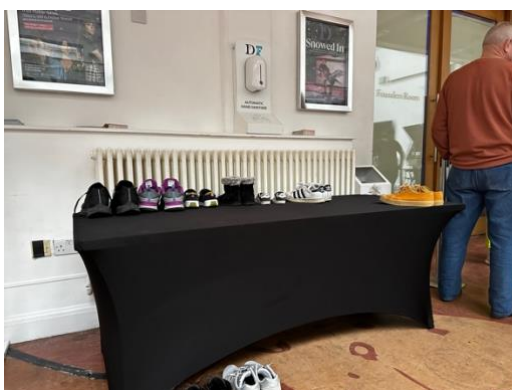
You will be able to wait in our Foyer before the performance. This is also where you can leave your bags and pushchairs.



Toilets, including accessible toilets, are located behind the bar. If you are unsure, a member of staff will be able to help you locate them.



Before the performance starts, you will be invited to take your shoes off so that everyone is safe to enjoy themselves, but you don't have to.



Touch and Glow

This is a 40-minute experience where you are invited to interact with different elements in the space as you prepare the krill for their krill ball! You will be guided through the experience by one performer, Dr. Gert, who will explain how you can interact with the elements and tell you all about the krill. Don't worry if you miss a little bit of what Dr. Gert is saying.

At the start of the performance, you will be met by Dr. Gert who will be dressed in bright yellow overalls. They will look a little bit like this:



Dr. Gert will say some words and then welcome everyone into the Founders Room. At the start of the performance, it will look like this:



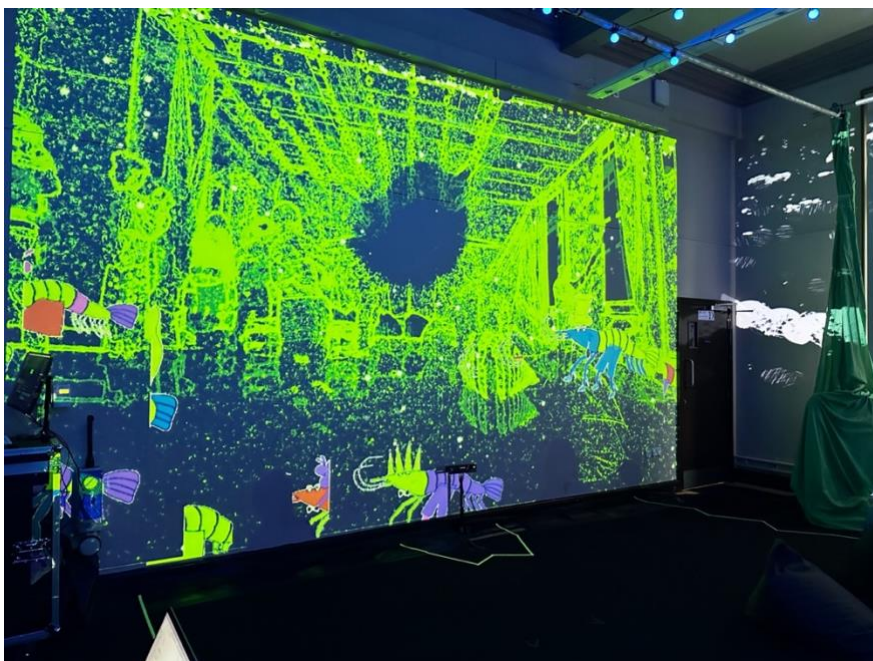
There are lots of things in the space that will change the way they look during the performance. The projections on the wall will move and change.



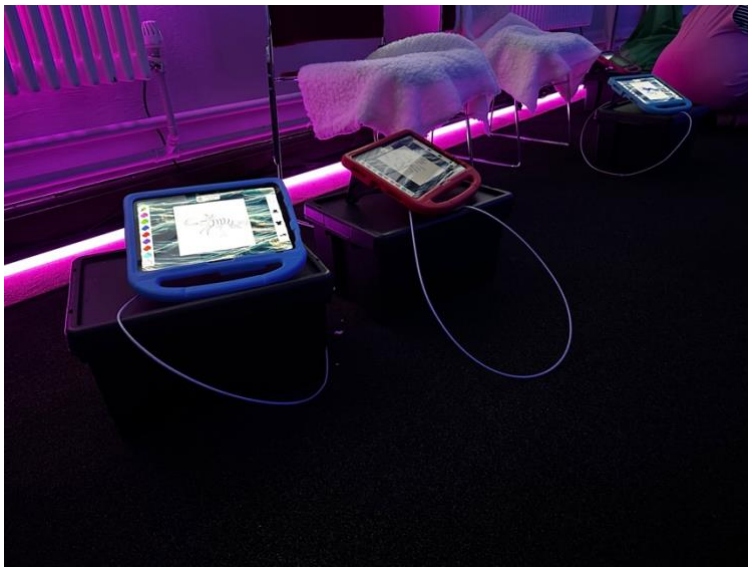
There are some glaciers in the room which light up. Dr. Gert will speak about these and demonstrate how you can interact with them.



The wall at the end is where you can see yourself and do some moves and there are lights overhead that change colour when you tap the glaciers.



During the expedition, you will also be able to use iPads to colour in krill, and Dr. Gert will explain how and when you can use them. There aren't many iPads, so make sure everyone has the chance to use them!



Dr. Gert will also invite you to dress up. You don't have to do this if you don't want to.



There is a krill creche where you chill out with sensory toys.



Once Dr. Gert has explained how everything in the room works, you will have free time to explore. Dr. Gert will let you know how long you have left!

At the end of the expedition, there will be a chance for you to dance! You don't have to join in if you don't want to.

Dr. Gert will let you know when the end of the expedition is near and will open the door for you.

It's time for you to put your shoes back on and collect any belongings you left in the Foyer.

You can leave the way that you came in.

We hope that you enjoyed the expedition!