

GARY CLARKE COMPANY DETENTION



WORKSHOP AND SHOW PACKAGE

To support the national tour of GARY CLARKE COMPANY'S highly anticipated dance theatre show **DETENTION**, DETENTION company dancers will deliver workshops to schools, colleges, universities and community groups as part of an exciting integrated package.

As part of the package, participants will undertake an individually tailored, 3-hour (flexible) creative movement workshop, watch a live performance of **DETENTION** at their nearest venue and be invited to give a critical response to choreographer **GARY CLARKE** as part of an engaging post show discussion. There will also be an opportunity to meet members of the company after the show (on request).

GARY CLARKE COMPANY strives to deliver bespoke experiences that are tailored to each group's individual needs. Our workshops sit within curriculum requirements at all levels and can be adapted to suit people dancing at all levels. We actively encourage group leaders to tell us how we can best work within their current work programmes, aims or assessments during our workshops through prior discussion with our Engagement Manager and Workshop Leaders.

MISSION STATEMENT FOR PACKAGE

'Using subject matters of historical and social relevance, our mission is to provide an exciting, supportive, educational and interactive environment where participants can flourish and develop their individual artistic voices and creativity. We actively strive to build confidence in those who are new to dance as well as nurture those who are more familiar. We pride ourselves on our unique delivery and aim to create a space that is inclusive and inspirational.'

'Our professional touring work aims to inspire and inform diverse audiences on social and political history whilst demonstrating the power of dance and storytelling.'

GARY CLARKE COMPANY

Responses to our workshop and show packages:

'Fun, intimate and interactive. I left the workshop feeling really inspired.'

BA (Hons) Dance student, Northern School of Contemporary Dance (Leeds)

'I really hope we can work with you again in the future. Our students have access to very few experiences like this ... and this has honestly inspired so many of them. The workshop was absolutely amazing!'

Nicola O'Malley, Head of Performing Arts, Trinity Academy (Doncaster)

WORKSHOP INFORMATION

Our workshops are flexible in terms of length and content and can be modified and adapted. We want to work in partnership with you to ensure we can provide a tailored experience for your group. Please use this pack as a guide and get in touch if you have any queries or questions.

GARY CLARKE COMPANY dancers are available to deliver workshops alongside the **DETENTION** tour.

COST

Workshop fee of £300 plus show tickets for workshop participants and group leaders at a special rate organised by each tour venue (ideally based on a group of 20 – 30).

We recognise that our workshop fees may be a barrier to participation for some groups. If this is the case, please chat with our Engagement Manager about how we might try to support you.

TOUR DATES / POST SHOW TALKS / MEET THE COMPANY

Please visit detentiontour.co.uk for up to date tour listings and when each post show talk will take place and contact our Engagement Manager for a **'Meet the Company'** opportunity.

AGE

Due to the mature themes explored in **DETENTION** (sexuality, identity, homophobia and protest), the age guidance for our workshop and show package is 14+. For more details, please contact our Engagement Manager.

EXPERIENCE & ACCESS

Workshops are tailored to fit individual groups and are suitable for groups with little or no dance experience aged 14+ as well as more experienced dance / theatre / performing arts students at all levels. We are also happy to lead workshops for participants with mixed experience levels.

Please notify us of any access needs in advance and we will endeavour to accommodate them.

PREPARATION

Prior to each workshop, our Engagement Manager will liaise with each group leader to complete a detailed booking form. The information provided will ensure the workshop is tailor made and that the content and level is appropriate for everyone. This also provides an opportunity for us to identify how we can support or compliment any work that is already being delivered.

In addition, we ask all workshop participants and leaders to complete a media consent form and to agree to our Workshop Code of Conduct. This helps us to create a respectful, supportive and inclusive environment for everyone. Please chat with our Engagement Manager for more details.

DURATION

Workshop: 3 hours (flexible)

Show: 85 minutes with no interval

Post Show Discussion: 30 minutes

WORKSHOP REQUIREMENTS

- At least 1 member of support staff (e.g. group leader) must be present at all times
- A large, warm studio space suitable for practical work with good lighting
- Access to play loud music from devices such as laptops or smart phones and the appropriate cables / attachments to do so
- Access to cold water (bottled or tap)
- Access to First Aid support
- WiFi (preferable but not essential)
- Large TV / projector screen to play footage from a laptop and the appropriate cables and attachments to do so (preferable but not essential)
- Participants must be dressed in practical clothing suitable for moving and trainers. Hair should be tied back and jewellery removed.

LIABILITY

All workshop leaders are DBS checked and carry full insurance.

BOOKING DETAILS

If you would like to enquire or book a workshop, please get in touch with:

Laura Barber, GCC Engagement Manager

Phone : 07999 548775

Email : engagementgcc@gmail.com





OUTLINE WORKSHOP CONTENT

Workshops will be led by 2 members of **GARY CLARKE COMPANY**.

WELCOME – 15 MINUTES

Participants will be welcomed to the workshop and introduced to each Workshop Leader and their background in dance as well as the work of choreographer **GARY CLARKE** and the production **DETENTION**. Participants will be introduced to the Workshop Code of Conduct, designed to create a space that is safe and supportive for everyone.

RESEARCH & SOURCE MATERIAL – 15 MINUTES

Research is a huge part of **GARY CLARKE'S** creative process and is vital in forming and shaping our work. Participants will be given a rare opportunity to delve into Gary's incredibly rich, personal research and source material (such as archive video footage, images, interviews and varied written texts) used to create **DETENTION**.

WARM UP – 30 MINUTES

Workshop Leaders will lead a fun and interactive physical warm up to adequately prepare the body and voice, including simple exercises, movement phrases, physical games and improvisation. This warm up can be modified depending on level and experience and can range from a light, simple approach to a rigorous, advanced, technique-based approach.

LEARN – 35 MINUTES

Participants will have the opportunity to learn selected sections of choreography from **DETENTION**. Workshop leaders will use a step-by-step approach that uses imagery and intention to physically explore **GARY CLARKE'S** dynamic and stylised choreographic style.

CREATE – 35 MINUTES

Working in pairs and small groups, participants will be led through a multi-layered creative process to produce their own movement material and choreographic responses to **DETENTION'S** source material and movement language. Workshop Leaders will support all participants through this process and will actively encourage them to think about new ways of creating movement based on **GARY CLARKE'S** choreographic approach.

SHARE – 20 MINUTES

In a safe and supportive environment, participants will have the opportunity to share their creative work with the rest of the group. The opportunity to share work in a performative setting is a rewarding experience that helps build confidence and skills.

COOL DOWN & REFLECTION – 15 MINUTES

Workshop Leaders will lead a simple cool down to regulate breathing and centre the body. Participants will then have the opportunity to reflect on the session using a variety of methods and will be encouraged to share their thoughts on what they have learned and experienced.

Q&A – 15 MINUTES

Participants will have the opportunity to ask questions about the production **DETENTION**, choreographer **GARY CLARKE** and the dance industry in general. As esteemed and experienced dance artists, **GARY CLARKE COMPANY** members have a wealth of experience to share and offer.

WORKSHOP LEADERS

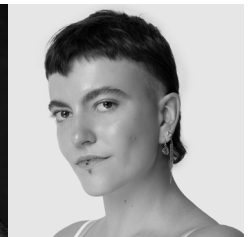
Workshops are delivered by members of **GARY CLARKE COMPANY**, bringing participants into direct contact with accomplished professionals, all with extensive experience of working in companies of international standing such as **balletLORENT**, **Hofesh Schechter**, **Tom Dale Company**, **James Cousins Company**, **Phoenix Dance Theatre** and **Botis Seva**. They have a wealth of experience of working in educational and community settings and deliver their work with confidence, compassion, knowledge and rigour.



IMO Wright



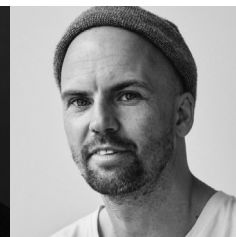
Alex Gosmore



Alexandra Bierlaire



Mayowa Ogunnaike



Gavin Coward

“DETENTION is the third and final part of a trilogy of dance theatre works following the multi-award winning COAL and critically acclaimed WASTELAND. What unites this trilogy is 1980s Britain, a time when our country was governed by Margaret Thatcher and how different marginalised communities fought for their human rights, their livelihoods and their existence.”

Gary Clarke

THE SHOW

DETENTION explores the impact of Section 28: a piece of largely hidden legislation from Margaret Thatcher’s Conservative Government in 1988, which ‘prohibited the promotion of homosexuality’, forcing people from the LGBT+ community into a place of secrecy, fear and shame at a time when the country was in industrial turmoil and the gay community was being ravaged by the onslaught of AIDS.

GARY CLARKE’S powerful and personal working-class storytelling draws on public and private stories and testimonies, including a rare insight into the LGBT+ Switchboard Logbooks, combined with vivid choreography performed by a company of exceptional dancers, an evocative narrator, a local cast of LGBT+ people, striking designs in film, sound, light and costume and music tracks by the iconic band Test Dept. **DETENTION** is a bold and moving exploration of the violence, loneliness, protests, debates, unlikely allies and the remarkable individuals and organisations of the time.

POST SHOW TALK

Following the performance of **DETENTION**, participants will take part in a unique post show discussion with **GARY CLARKE** and company members, where they will have the opportunity to share their critical responses and opinions as well as contribute to a question and answer session about the work.

They will also have the opportunity to meet choreographer **GARY CLARKE** and the cast of **DETENTION** (on request).

GARY CLARKE COMPANY

Co-founded and led by Artistic Director Gary Clarke and Executive Producer Annabel Dunbar, **GARY CLARKE COMPANY** is a pioneering, award-winning dance theatre company based in South Yorkshire. Renowned for high impact, high quality and high legacy work, the company tours extensively to middle scale venues across the UK, most recently the award-winning **COAL** (2016 – 2018) and critically acclaimed **WASTELAND** (2019/20 – 2023).

GARY CLARKE

GARY CLARKE is an acclaimed British Choreographer, Performer and Movement Director. His theatrical dance works have toured extensively both nationally and internationally to critical and audience acclaim.

Gary’s work has received a number of awards including **A UK Theatre Award for Achievement in Dance** (COAL) and **A Critics Circle National Dance Award** (COAL). He has also created stage and site-specific work for a number of companies and organisations including **The National Theatre, Opera North and The 2012 Olympic and Paralympic Games**. Gary has worked as a movement specialist on a number of large scale feature films including **World War Z** and **The Mummy**.

In 2017, Gary was appointed as an honorary fellow at **The Northern School of Contemporary Dance**.



Gary Clarke

DETENTION is produced by **GARY CLARKE COMPANY** and co-commissioned by:



Midlands co-presenter:

GARY CLARKE COMPANY is a Company Limited by Guarantee. Registered in England and Wales. Registration no.13343147. Registered office: The Civic, Hanson Street, Barnsley, S70 2HZ. Charity registration no: 1205922

Core funders:



Supported using public funding by
ARTS COUNCIL ENGLAND

John Ellerman Foundation

Member of:



Theatre Green Book
we're trialling a sustainable production