

Brighton Dome

ANITA'S ROOM VENUE SPECIFICATION

Revision 04– Updated 31.10.2023

SUBJECT TO CHANGE

VENUE ADDRESS: Church Street, Brighton.
(Please speak to your producer about accessing the space)

STAGE DOOR #: 01273 261550 (Please check times agreed in your contract)

FORMAT: A compact area, the space is equipped a pipe grid for the suspension of equipment and power supplies to support small performances and events.

Main Space 8.4m by 5.9m approx.
Height to grid 4.2m

CAPACITY/FORMATS 40 people using main space, office and kitchen.
All capacities subject to final confirmation

ANCILLARY SPACES A small office leads from the Creative space and can be utilised by those using that area. Some storage for users is provided in that area. Access is from the Creative space itself.

The area is further supported by a small kitchen which will have a fridge/freezer, kettle and microwave which can be used by incoming companies.

An accessible toilet and shower room also supports the space.

LOAD IN Access control outside CEX front Door on Church St, into CEX Foyer then through glass door on west wall of Foyer. Then upstairs to second floor. Lift access can be arranged from Studio side of the building. Please inquire for further details.



PARKING

Limited parking may be available depending on the needs of other building users. Please specify parking needs in advance of your visit.

STAGE LIGHTING

A fixed rig to support basic theatre lighting. The room is supplied with

- 6x 650w Fresnel (2x 'U/S', 4x 'D/S')
- 6x Source Junior wide zoom. (3x 'U/S', 3x 'D/S')

A manual lighting fader control desk is provided for the simple operation of the stage lighting. This can be supplemented by a computerised console should it be needed. This will require a house technician to install and should be booked in advance.

STAGE LIGHTING POWER

63A 3ph outlet for temporary dimmers etc. Distribution box of 63a 3ph in to 2of 32a 3ph for dimmers.

NB: this power can only be used if not using the installed lighting

STAGE AUDIO

A wall mounted line input with volume control allows the plug in of ipods or other for playback from the PAVA speakers for background ambient music.

2 D&B E3's are suspended from the pipe grid for higher volume sound reinforcement as required.

A 6 channel audio mixer is also in the space for use of an SM58 or playback requirements via the Aux cable supplied. A E12Sub can be provided with the assistance of a Technician to booked)

STAGE AUDIO POWER

32A 1ph supply presented as 4no. 13A sockets

ACCESSIBILITY

Anita's Room is fully accessible via the front of house lift and is all on a level surface without steps.

Assisted listening is provided via the Sennheiser Mobile Connect system which allows users to download the app and tether hearing aids to their phone without the need for peripheral equipment.

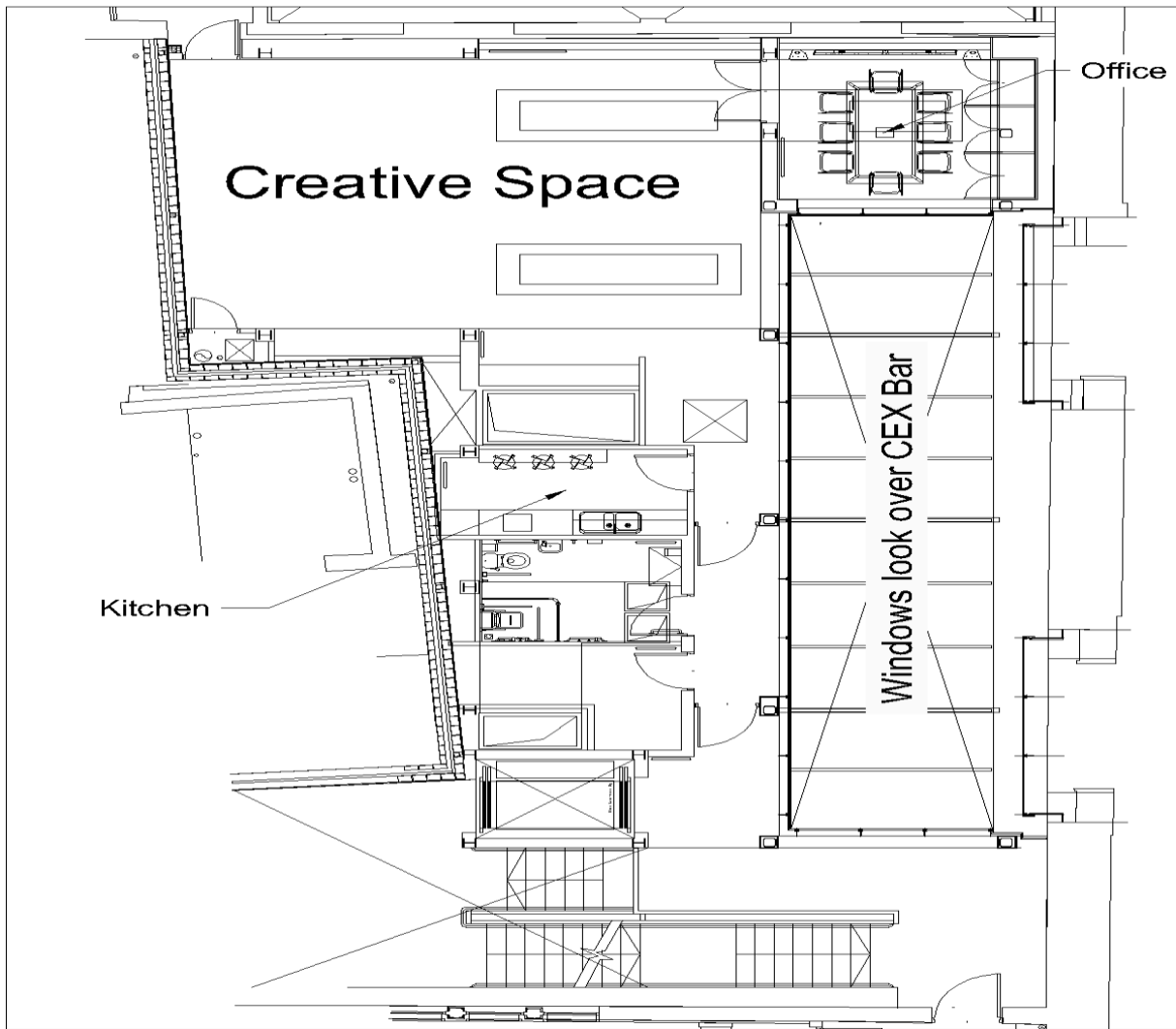
2no. Microphones suspended from the pipe grid allow for the pick-up of speech or playback in the room and can be balanced to where the sound origin is in the room as required.

In the case of presentation or performance, radio mics or other local mics can be fed into the assisted listening system as needed.

NB: As of 15th June 2023 this system is not yet installed. Please contact Production if needed.



Whole space, incl office and kitchen etc.



Pipe Grid

